

**Total Tankless Solution (TTS) Specification Sheet**

# S SERIES

**Standard Commercial Tankless  
Water Heater System****UNMATCHED TECHNOLOGY**

FRG's TTS Series provides the most complete commercial water heater solution in the market. This tankless water heating system provides up to 1.2 million BTU/h in the smallest footprint while having the advantage of redundancy and equalizing heating performance.

**KEY FEATURES****OPC (One Point of Connection)**

- Water, Power, Gas, Venting & Condensation Drain

**Manifold systems**

- Hot Water Outlet, Cold Water Inlet, Gas, Condensate Drain

**Building recirculation****Reduction in labor hours****Worry-free installation****Designed to fit through 3'-0" x 7'-0" Door****Pre-engineered system****Pre-configured control wiring****Pre-installed system controllers****Warranty**

- 10 Years Heat Exchanger per Tankless Unit
- 5 Years Water Heater Parts & Components
- 3 Year Circulation Pump
- 1 Year Labor

**Additional accessories:**

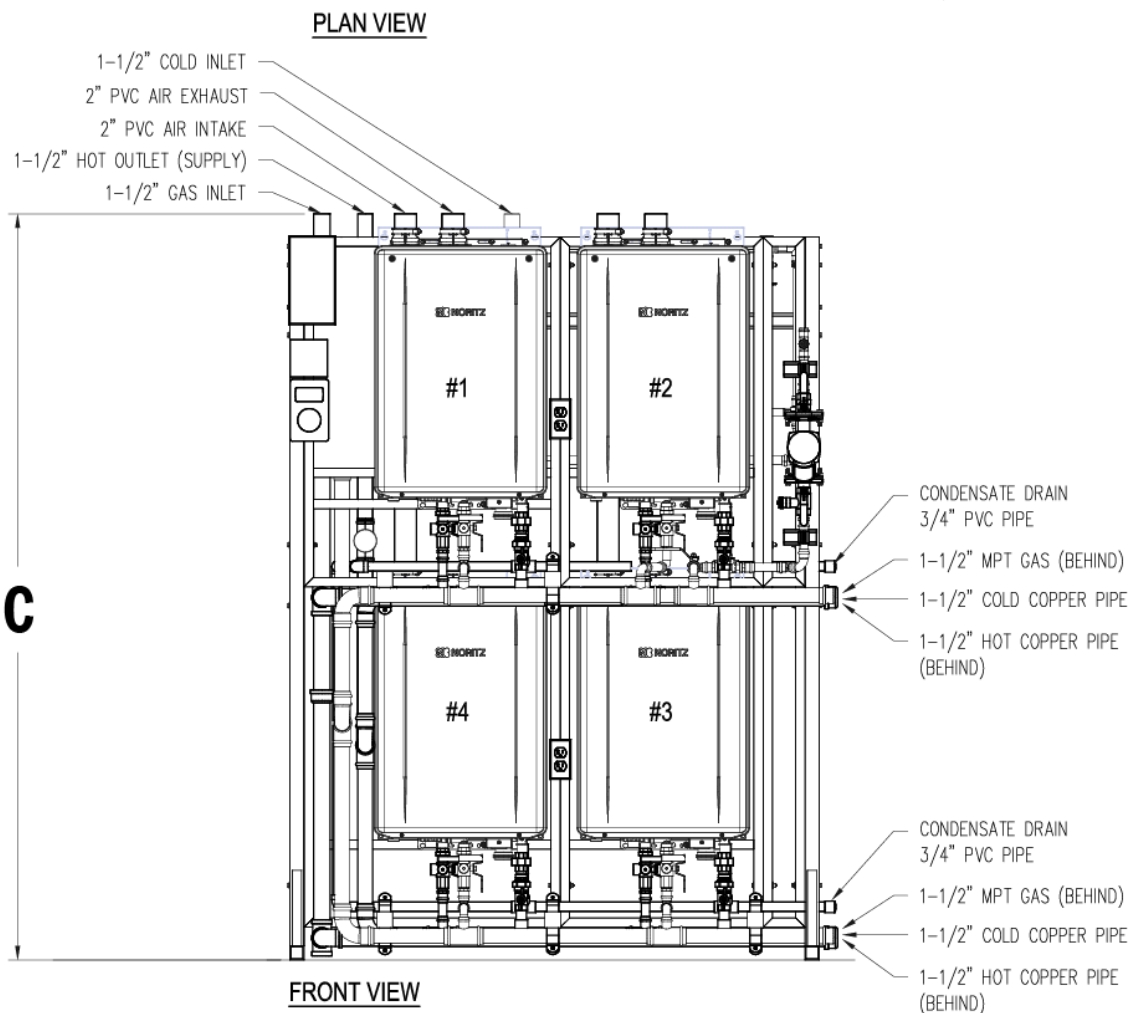
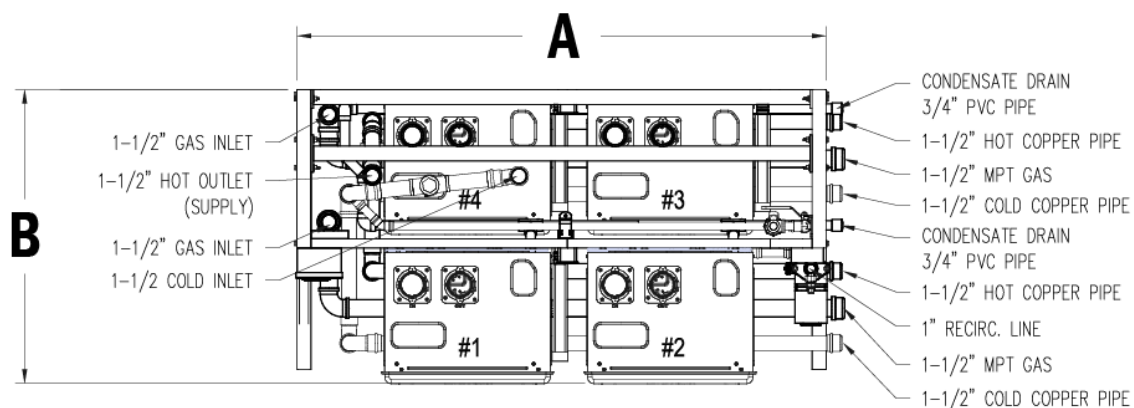
- Condensate Neutralizer (2x for TTS-S5/6 Models)
- Expansion Tank (Non-ASME)
  - 2.1 Gallon (TTS-S2MINI/3/4MINI Models)
  - 4.5 Gallon (TTS-S5/6 Models)



## TTS-S SERIES SPECIFICATIONS (SYSTEM DIMENSIONS)

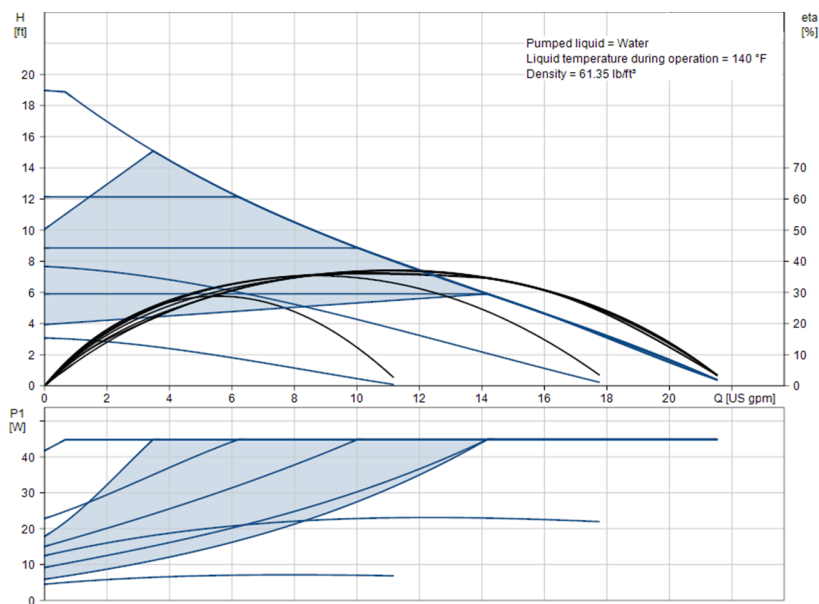
	Length (A)	Depth (B)	Height (C)
<b>TTS-S2MINI: Total Tankless Solution - Standard Series (399,800 BTU/hr)</b>	35"	31.5"	80"
<b>TTS-S3: Total Tankless Solution - Standard Series (599,700 BTU/hr)</b>	52.25"	31.5"	80"
<b>TTS-S4MINI: Total Tankless Solution - Standard Series (799,600 BTU/hr)</b>	56.75"	31.5"	80"
<b>TTS-S5: Total Tankless Solution - Standard Series (999,500 BTU/hr)</b>	74"	31.5"	80"
<b>TTS-S6: Total Tankless Solution - Standard Series (1,199,400 BTU/hr)</b>	95.75"	31.5"	80"

### Example Model: TTS-S4MINI



# TTS-S SERIES SPECIFICATIONS (PARAMETERS)

Model Name		TTS-S2MINI	TTS-S3	TTS-S4MINI	TTS-S5	TTS-S6
Min. Input (BTU/HR)		18,000				
Max. Output (BTU/HR)		399,800	599,700	799,600	999,500	1,199,400
Turn Down Ratio		22:1	33:1	44:1	55:1	66:1
System Dimensions L X D X H (IN)		35 X 31.5 X 80 (51 CU. FT.)	52.25 X 31.5 X 80 (76 CU. FT.)	56.75 X 31.5 X 80 (83 CU. FT.)	74 X 31.5 X 80 (108 CU. FT.)	95.75 X 31.5 X 80 (140 CU. FT.)
System Weight (LBS)		180	295	325	460	530
Shipping Dimensions L X D X H (IN)		45.5 X 42 X 83.5 (92 CU. FT.)	65.5 X 42 X 83.5 (133 CU. FT.)	76.5 X 42 X 83.5 (155 CU. FT.)	86.5 X 42 X 83.5 (176 CU. FT.)	108.5 X 42 X 83.5 (220 CU. FT.)
Shipping Weight (LBS)		360	525	795	1,060	1,130
GPH @100°F Rise		468	702	936	1,170	1,404
Operating Pressure		15 - 150 psi				
Gas Supply Pressure		NG: 3.5” - 10.5” LP: 8.0” - 14.0”				
Water Holding Capacity		0.80 Gallon (3.2L) per Heater				
Connection Size	Water Inlet	1-1/2" LC-ODT/PP				
	Hot Water Outlet	1-1/2" LC-ODT/PP				
	Hot Water Recirculation Return	3/4" LC-ODT/PP				
	Gas Inlet	1-1/2" Sch40-BI-NPT (2)				
	Condensate Drain	3/4" Sch 40 PVC-ODT				
Power Consumption	Supply Total Rack	208/240 VAC 1-PH 20-AMPS		208/240 VAC 1-PH 30-AMPS		
	Sub - Heater	120VAC (60Hz), less than 4 amperes				
	Sub - Recirculation Pump	120VAC (60Hz), 5 to 45W				
Temperature Setting	°F Mode	100-150°F (In 5°F intervals), 160°F, 170°F, 185°F (14 Options)				
	°C Mode	37-48°C (In 1°C intervals), 50-85°C (In 5°C intervals) (20 Options)				
Materials	Heater Front Cover	Hot-dipped zinc-aluminum-magnesium-alloy-coated steel w/ Polyester Coating				
	Heater Casing	Zincified Steel Plate / Polyseter Coating				
	System Rack	Aluminum				
Pump Performance	Sub - Recirculation Pump	3.5-GPM @ 15' of head (see Pump Curve below)				



This Page Intentionally Left Blank